

Dove's Doings



Dove Ministries for Children • 2499 Hyacinth Ct. • Westbury, NY 11590
Phone (516) 935-3683 • Fax (516) 935-0365 • www.doverehab.com

Unpacking Spatial Relations



- What is it?
- How is this used in daily living skills
- What can I do to help this develop?

Spatial Relations

Spatial relations may be defined as an emerging developmental skill that incorporates the ability to appreciate the location of objects in relationship with each another and also with oneself. This relates to appreciation of a three dimensional concept of objects in the environment (i.e. righting socks or sleeves that have been turned inside out). The three dimensional concepts also relate to oneself (i.e. washing under the armpit).

Researchers have begun to document that when these skills are developed at an early age, they signal the likelihood of success in mathematics and eventual expertise in science, technology and engineering. In preparing our children for marketable skills, we need to assure that they will be able to visualize spatial relations and respond to spatial language as these are important for success in social and academic circles. For example, imagine a party when your classmate says “sit over here”, and you have no clue as to what this means. Handwriting is another skill that fails to emerge appropriately when spatial relations are poorly developed.



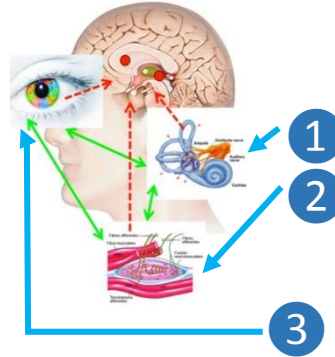
Which foot fits this shoe?



Developmental Concerns

Awareness of the self in space emerges from sensory processing skills within the:

1. inner ear
(vestibular input)
2. muscle receptors
(proprioceptive input)
3. Eyes (visual input)



children who have sensory processing disorders are at high risk for impaired spatial relations.

What you can do to help

- A. Use movement, to activate the vestibular system. Be sure to use a visual target.



- B. Plan to build heavy work into your home program, strengthen weak muscles

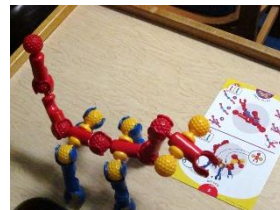


- C. Use visuo spatial hand crafts and food crafts to improve space visualization skills



More helpful things to do

Introduce construction toys. Make sure they have clear, simple instructions. Ask questions about where parts go to encourage development of spatial language.



Strengthen visual motor and visual pursuit skills by use of toys and crafts that require alignment of parts



With the start of this New Year, we would like to broaden our digital footprint. If your child has received services from us, or if you have known us in a professional context, please leave a review for us on Facebook or Google. And by all means, visit us online regularly.